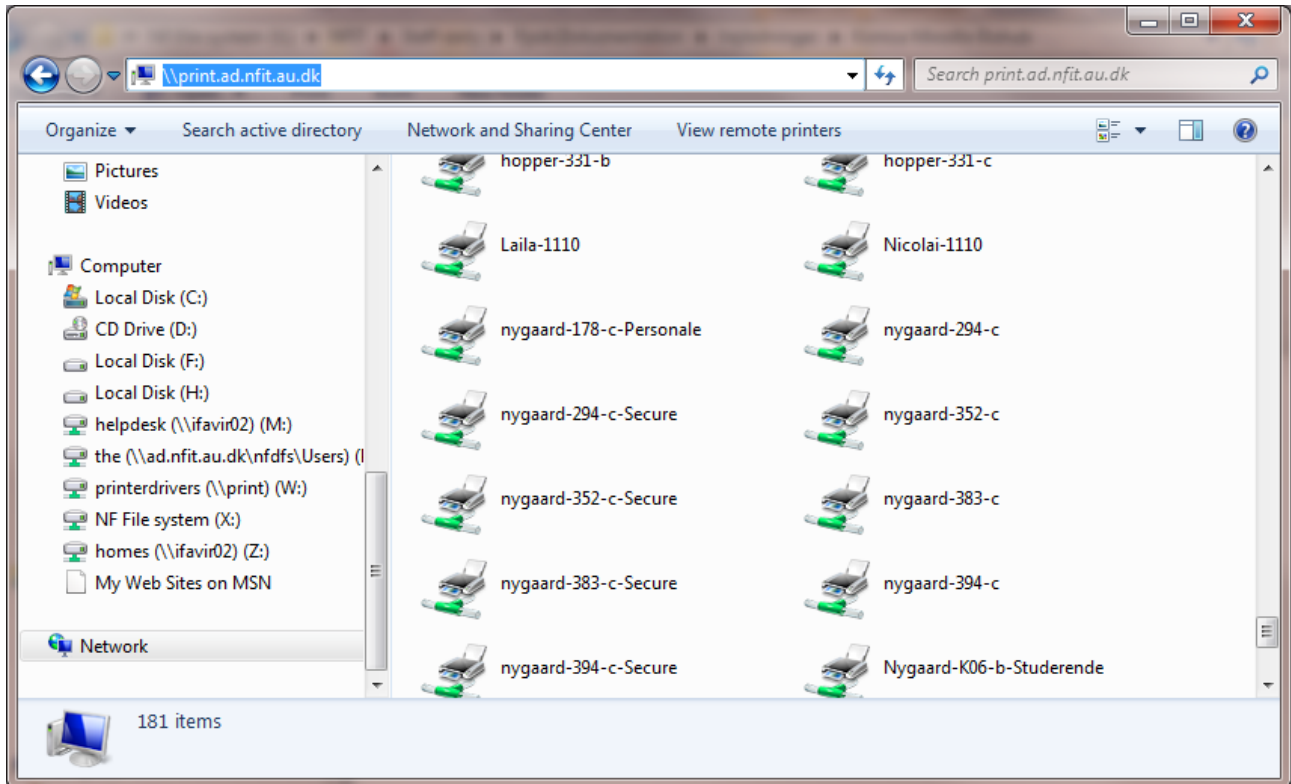


Guide for installation, configuration and use of Konica Minolta bizhub.

Open File Explorer. Enter the print-servers name "\\print.nfit.au.dk\" and press Enter.
Find the desired printer and double-click it. Accept the installation of driver if you are asked.



The printer is now installed.

If you need to print secure prints please also install the "Secure" version of the printer.

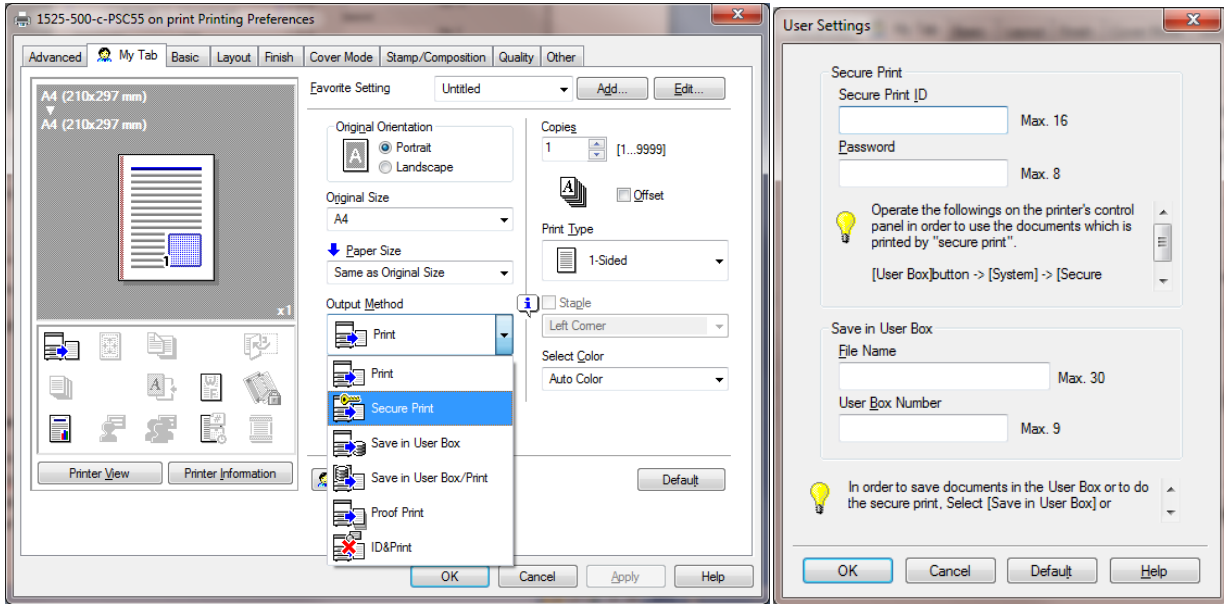
Se next page for configuration and use of "Secure print".

configuration and use of "Secure print".

Click on Windows "Start" (lower left on your screen)

Choose "Devices and Printers"

Right-click the "Secure" version of the printer and select "Preferences"



Select "Secure Print" in "Output Method" and enter User-ID and Password of your choice. Click "OK"

The printer queue is now ready and will hold the print till you release it through the printers display.

Release of Secure print on the printer itself.

1. Press the button **Boks** under the display and then the display button "Brugerbakke for sikker udskrift"
2. Enter User-ID and press the display button "OK". Enter Password and "OK".
3. Now select the / those jobs you want to print and press the display button "Udskriv".
4. Press "Start"

/End